

ladder

vein

5

⇒ hepatic tri

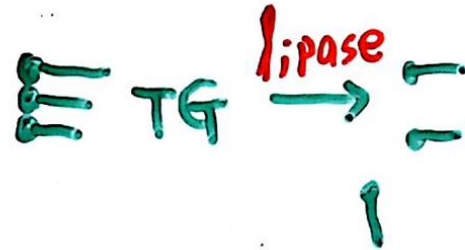
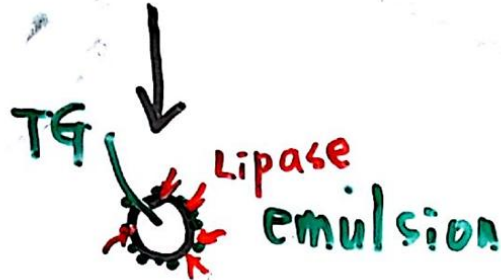
TG
lipid



+



bile salt



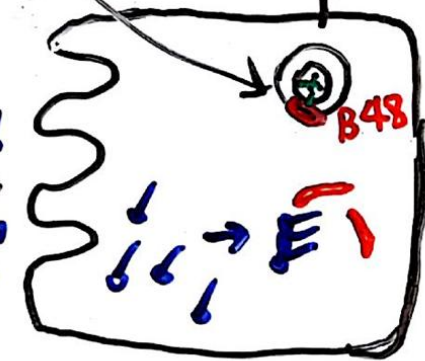
in



Chylomicron

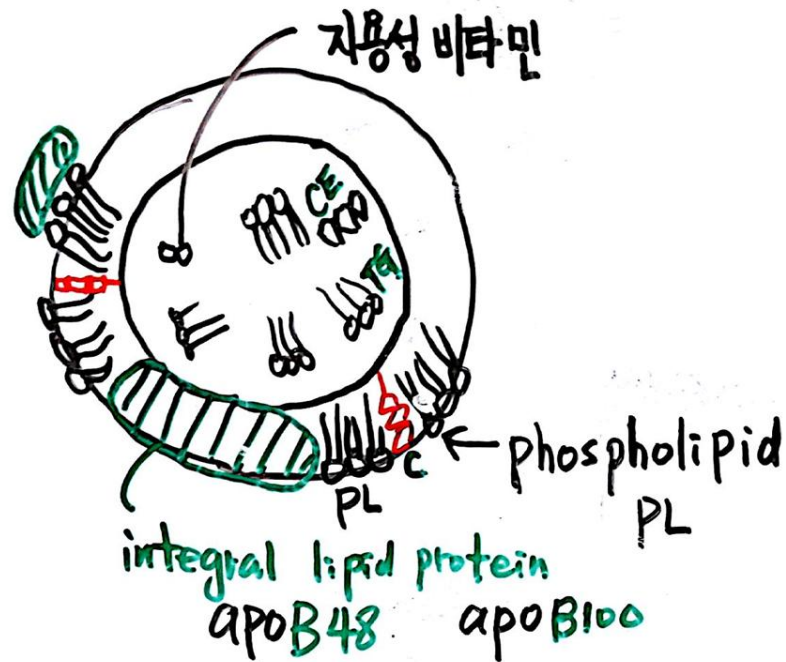


micelle



VLDL





AI, AII, CI, CII, CIII, D, E
 B48, B100 \rightarrow LPL \uparrow
 \rightarrow LCAT \uparrow C \rightarrow CE

9

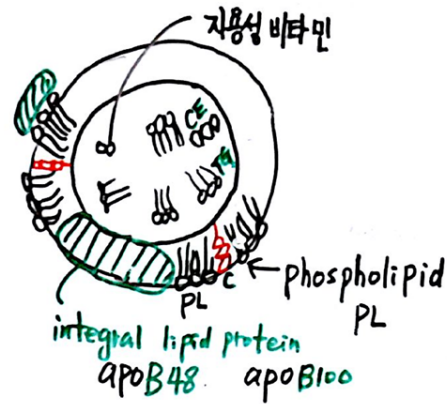
amylase, protease, lipase

· 모방 분능 ·

· 타인의 표정 · 속에 산다

· 타인의 욕망 · 을 욕망

⇒ mind in society



AI, AII, CI, CII, CIII, D, E

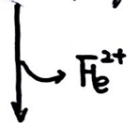
B48, B100 → LPL ↑

LCAT ↑ C → CE

gallbladder

hemoglobin

→ heme, globin



biliverdin → bilirubin

↓
Conjugated bilirubin

portal circulation

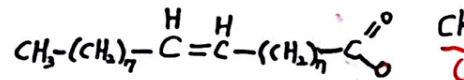
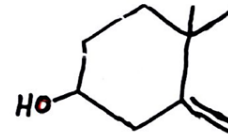
intestine bacteria flora

feces kidney → urine

amylase, protease, lipase

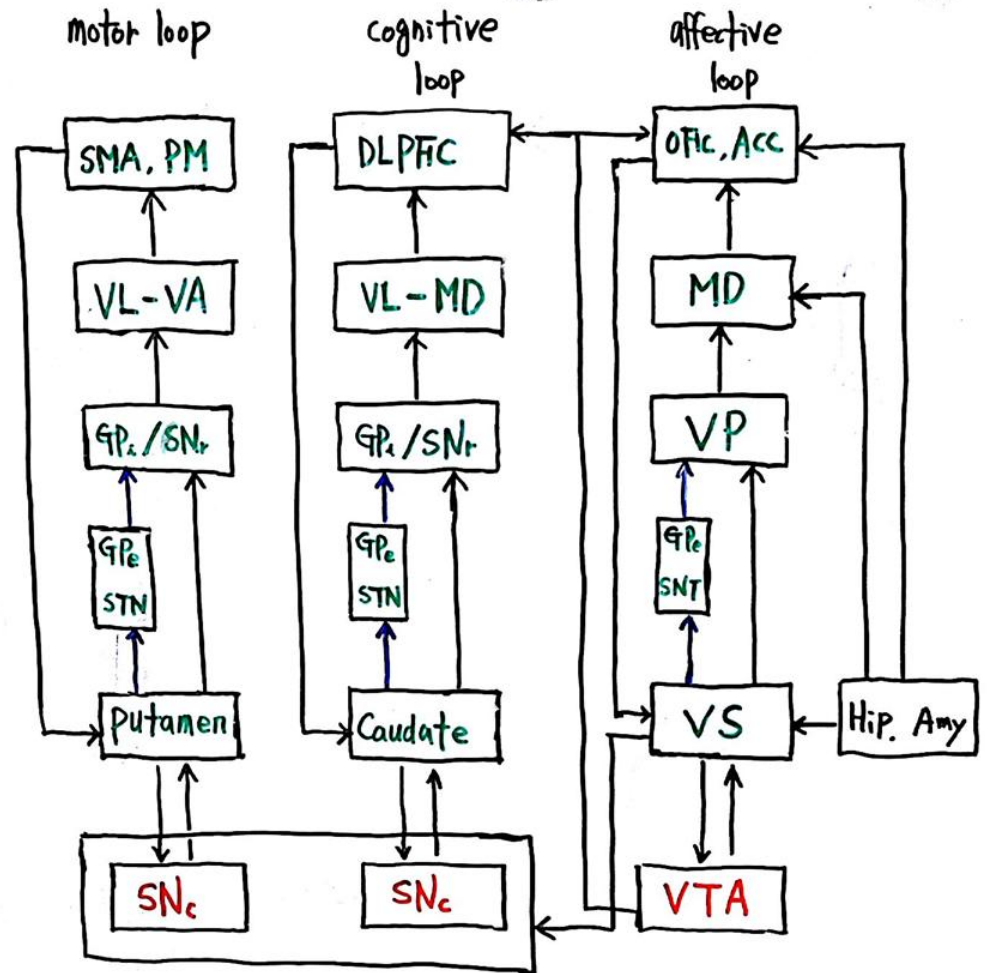
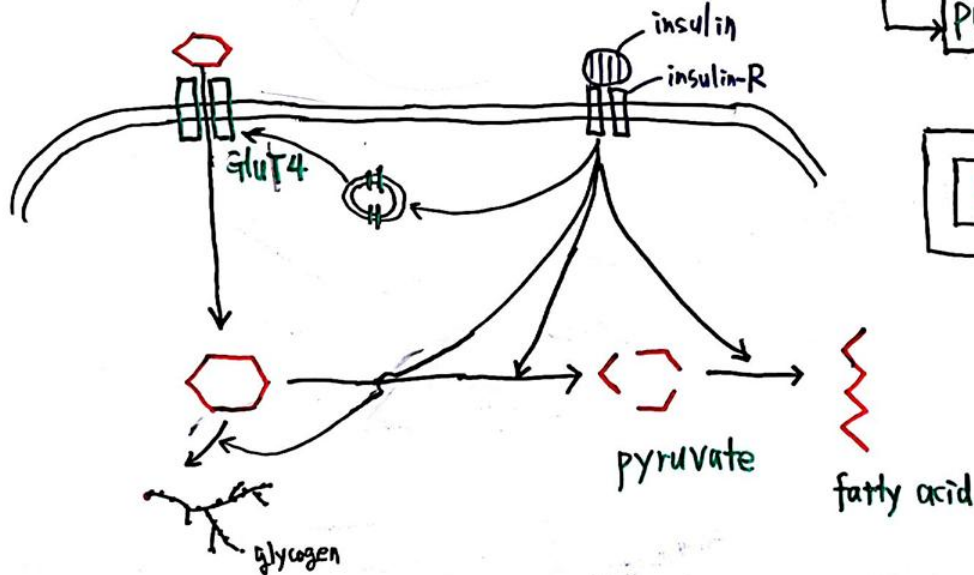
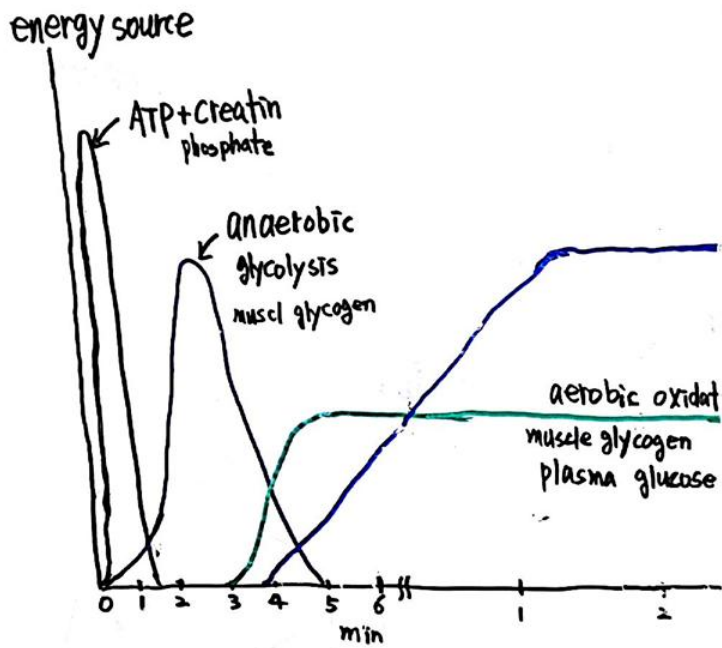
폐경기 이전 여 20% ↑ HDL

트랜스 지방 ⇒ LDL ↑, HDL ↓



cholesterol ester → CE

cholesterol



200/130/60 mg/dl
 CTCE LDL HDL

phospholipid PL
 apo B100

CI, CII, CIII, D, E
 300 → LPL
 C → CE

protease, lipase

이전 여 20% ↑ HDL
 빈 지방 ⇒ LDL ↑, HDL ↓

