

Triassic 251 ~ 199.6 51.4 Ma

Pangea, 건조한 대륙성,

증발암, 육방산호, 코고리스. 멕시코만 해저 증발암

P/T 코노돈트 멸종, mammal like reptile 계속진화

침엽수. 소철. 은행. Bennettites

Cretaceous 145.5 ~ 65 80.0 Ma

120 Ma Super plume,  $\text{CO}_2 \uparrow$ , 6~14°C

250 m  $\uparrow$ . 해양판 생성 1.5~2  $\uparrow$ , OAE,

black shale,

속씨식물,

Tyrannosaurus, Triceratops, Pteranodon  
6~8 m

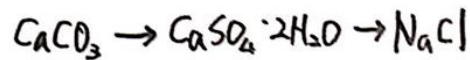
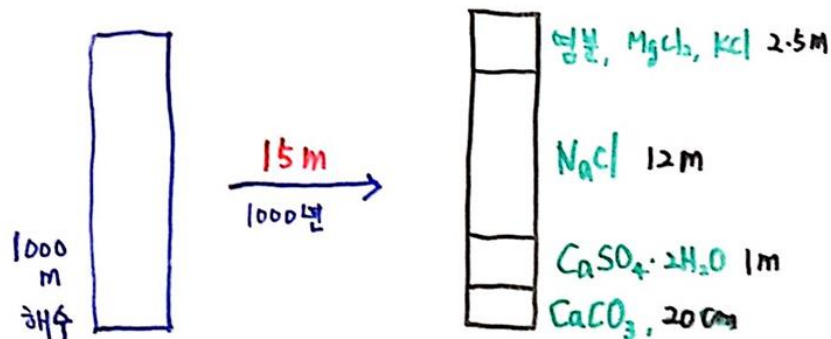
Jurassic 199.6 ~ 145.5 54.1 Ma

건조한 대륙성 기후 완화

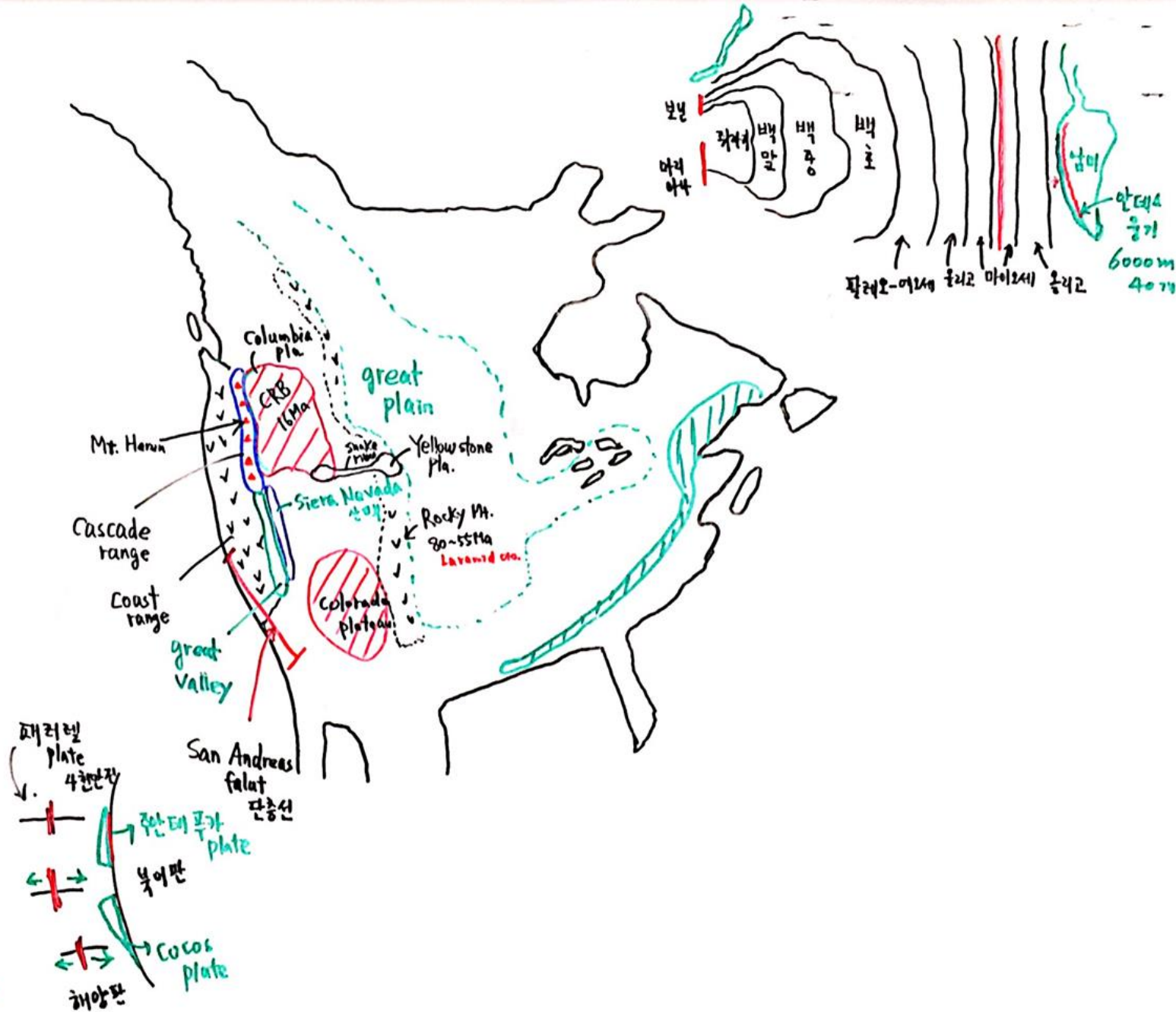
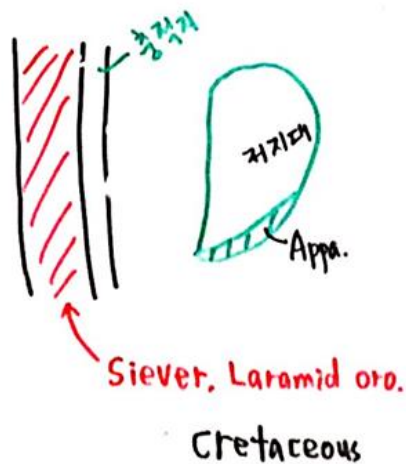
침엽수 대륙 내부 확산

theropodia : Allosaurus  
수각류 megalosaurus  
이족보행

어룡: Ichthyosaurus → Belemnite  
plesiosaurus 장경룡



1 l → 35g 소금



Cretaceous



