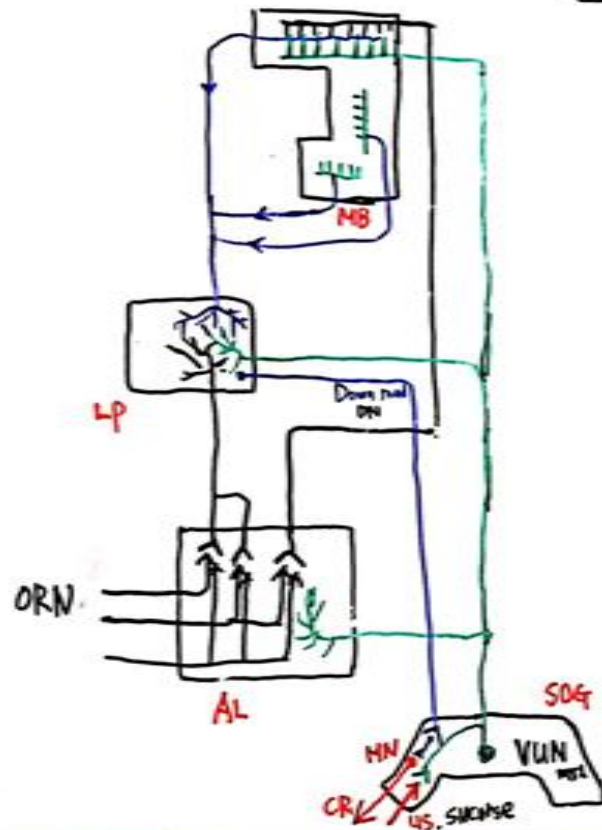
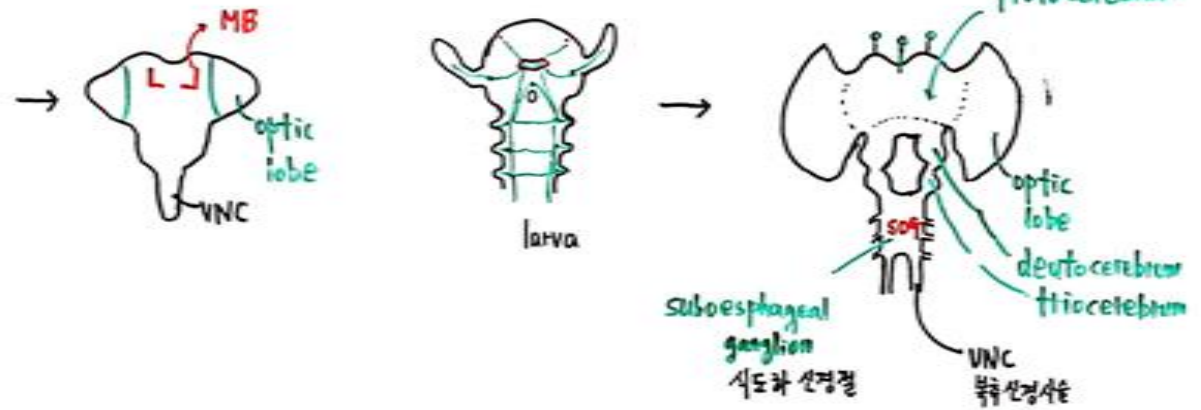
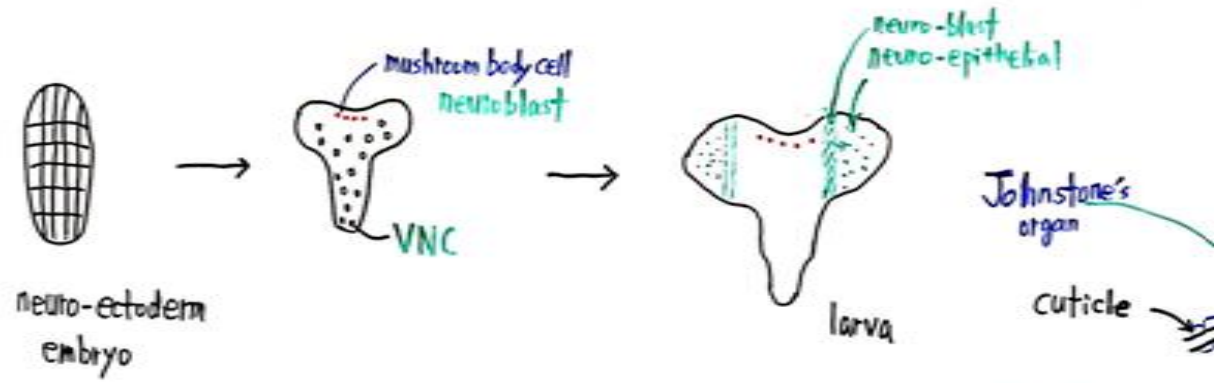


뇌는 목적없으면
빈둥거린다



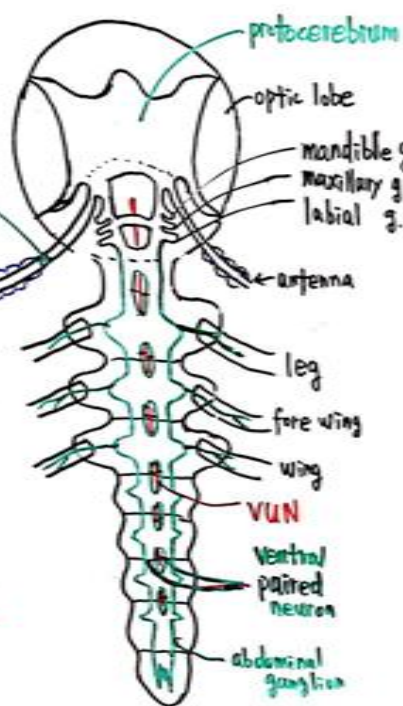
metathal

Johnstone's organ

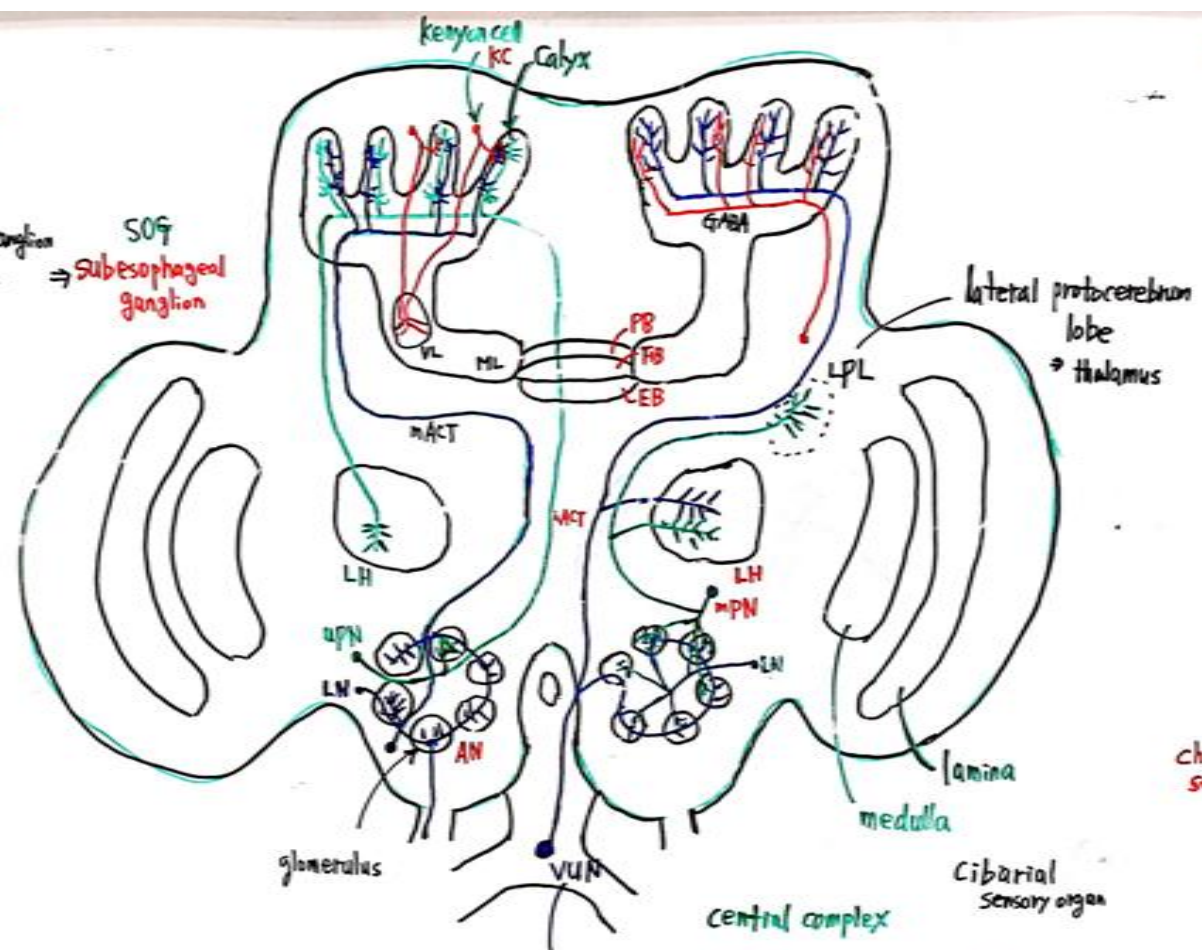
proto-cerebrum

optic lobe
deuto-cerebrum
thio-cerebrum

VNC
복합신경세포



SOF
⇒ Subesophageal ganglion



chemo-sensory

labrum 콧날
mandible 턱
maxillary 턱 → maxillary palp
hypopharyngeal 환식
labium 아래입 → labial palp

Ventral unpaired neuron
Mx1

central complex

PB → step length
FB → right, left
EB → orientation

Cibarial sensory organ

PB, FB
⇒ striatum
EB - GP, GR

